

# PHOTOCELLS

## Trifo 11

Modulated infrared light safety device



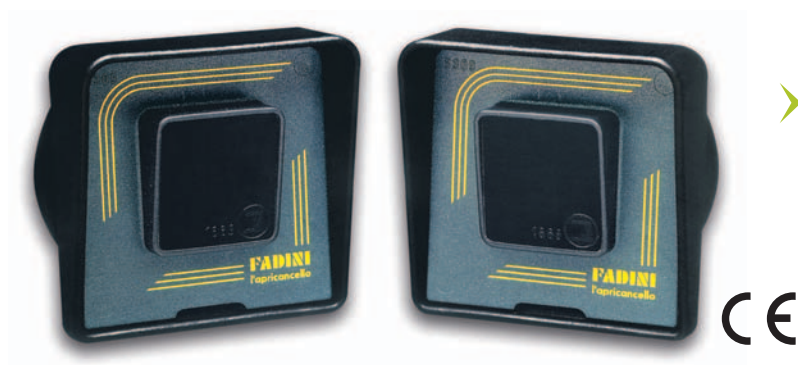
- Easy to install
- Designed to occupy a minimal amount of space
- Enclosed in a knock-resistant plastic container
- Wall-mounted installation or application on extruded, anodized aluminium posts



Pair of anodized posts  
with 0.5 m base

## Difo 33

Modulated infrared light safety device, in a range of possible installations.



- Strong plastic containers
- Wall-mounted, semi-fitted installation inside its own container or on external steel post supports
- Weather-resistant and insensitive to other light sources and reflections

## Polo 44

Despite its smallness, this modulated infrared light safety device has a considerable capacity. It has a new, attractive design, developed in order to meet our clients' installation requirements: easy device alignment, for any wall-mounted or post-mounted installation environment, complete with all necessary assembly accessories.

- Practical and immediate installation
- All assembly solutions guaranteed
- Complete post installation kit
- Posts in anodized aluminium



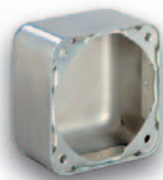
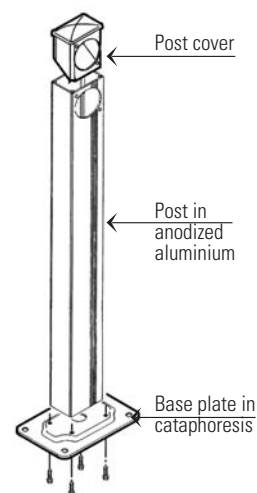
0.54 m post



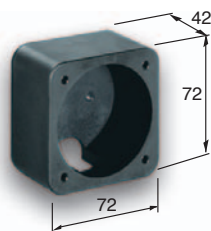
0.75 m post



1.20 m post with 2 holes



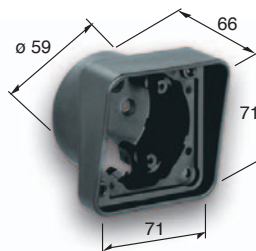
Containing cap in zinc-coated steel



Plastic spacer base fitted into the wall



Flat wall-mounted external container



Fitted container dimensions



Lateral corner support for flat wall-mounted containers



Hole reduction flange

